

Daily Summary for Amman Stock Exchange

1- VALUE TRADED (JD)

	2018	2019	NET CHANGE	CHANGE (%)
Daily	2,037,111	2,638,785	601,674	29.54%
Cumulative(2/6-3/6)	5,136,467	6,126,159	989,692	19.27%
Cumulative(2/1-3/6)	711,353,345	577,010,993	-134,342,352	-18.89%

2- NO. OF SHARES TRADED

	2018	2019	NET CHANGE	CHANGE (%)
Daily	1,405,486	2,787,556	1,382,070	98.33%
Cumulative(2/6-3/6)	3,898,516	6,784,682	2,886,166	74.03%
Cumulative(2/1-3/6)	547,529,422	448,215,154	-99,314,268	-18.14%

3- NO. OF TRANSACTIONS

	2018	2019	NET CHANGE	CHANGE (%)
Daily	1,343	1,693	350	26.06%
Cumulative(2/6-3/6)	2,795	3,336	541	19.36%
Cumulative(2/1-3/6)	250,266	202,879	-47,387	-18.93%

4- SOME FINANCIAL RATIOS FOR THE ASE (3/6/2019)

SECTOR	P/E	P/BV	DIVIDEND YIELD (%)	TURNOVER (%)
FINANCIAL	11.140	0.997	5.768	0.034
SERVICES	15.781	1.100	5.555	0.042
INDUSTRY	18.677	1.260	4.200	0.071
OVERALL	11.585	1.069	5.746	0.041

5- STOCK PRICE INDEX WEIGHTED BY FREE FLOAT MARKET CAPITALIZATION (1999=1000)

	SUNDAY 02/06/2019	MONDAY 03/06/2019	% CHANGE	
			DAY BEFORE	YTD
GENERAL	1806.3	1806.5	0.01%	-5.36%
FINANCIAL	2502.6	2510.1	0.30%	-5.38%
SERVICES	1235.3	1230.4	-0.39%	-3.86%
INDUSTRY	1788.8	1778.7	-0.57%	-5.53%

6- STOCK PRICE INDEX WEIGHTED BY MARKET CAPITALIZATION (1991=1000)

	SUNDAY 02/06/2019	MONDAY 03/06/2019	% CHANGE	
			DAY BEFORE	YTD
GENERAL	3497.0	3498.2	0.03%	-7.87%
BANKS	7379.4	7389.3	0.13%	-10.39%
INSURANCE	1314.3	1325.6	0.86%	-3.70%
SERVICES	730.5	733.4	0.40%	-7.96%
INDUSTRY	2322.3	2311.0	-0.48%	-0.01%

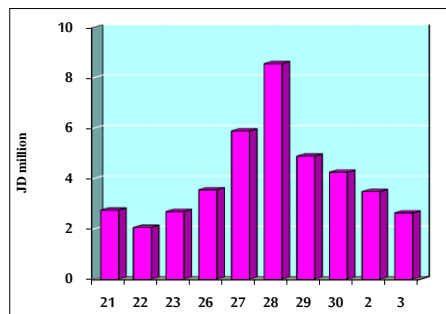
7- STOCK PRICE MARKET INDEX WEIGHTED BY FREE FLOAT MARKET CAP. (2012=1000)

	SUNDAY 02/06/2019	MONDAY 03/06/2019	% CHANGE	
			DAY BEFORE	YTD
FIRST MARKET	955.1	954.0	-0.11%	-5.66%
SECOND MARKET	826.0	831.0	0.60%	-0.08%

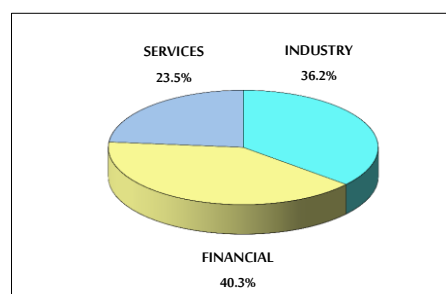
8- MARKET CAPITALIZATION (JD)

ASE MARKET CAPITALIZATION	14,925,006,047	14,928,546,138	0.02%	-7.41%
---------------------------	----------------	----------------	-------	--------

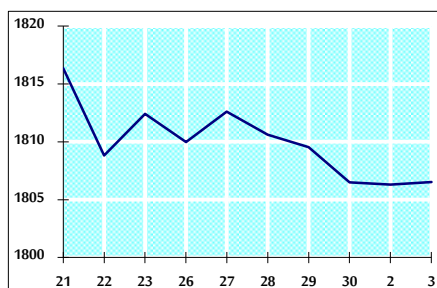
VALUE TRADED FROM 21/5 TO 3/6/2019



VALUE TRADED BY SECTOR MONDAY 3/6/2019



GENERAL FREE FLOAT PRICE INDEX FROM 21/5 TO 3/6/2019



GENERAL PRICE INDEX FROM 21/5 TO 3/6/2019

