

Daily Summary for Amman Stock Exchange

1- VALUE TRADED (JD)

	2018	2019	NET CHANGE	CHANGE (%)
Daily	3,214,922	3,539,719	324,797	10.10%
Cumulative(1/8-4/8)	54,761,979	8,438,922	-46,323,057	-84.59%
Cumulative(2/1-4/8)	941,367,552	826,248,153	-115,119,399	-12.23%

2- NO. OF SHARES TRADED

	2018	2019	NET CHANGE	CHANGE (%)
Daily	3,537,034	3,384,473	-152,561	-4.31%
Cumulative(1/8-4/8)	13,435,893	8,774,266	-4,661,627	-34.70%
Cumulative(2/1-4/8)	690,033,927	697,561,004	7,527,077	1.09%

3- NO. OF TRANSACTIONS

	2018	2019	NET CHANGE	CHANGE (%)
Daily	1,731	1,911	180	10.40%
Cumulative(1/8-4/8)	3,210	4,376	1,166	36.32%
Cumulative(2/1-4/8)	308,667	308,849	182	0.06%

4- SOME FINANCIAL RATIOS FOR THE ASE (4/8/2019)

SECTOR	P/E	P/BV	DIVIDEND YIELD (%)	TURNOVER (%)
FINANCIAL	11.242	1.005	5.719	0.046
SERVICES	16.755	1.168	5.232	0.065
INDUSTRY	20.302	1.367	3.878	0.043
OVERALL	12.117	1.110	5.501	0.050

5- STOCK PRICE INDEX WEIGHTED BY FREE FLOAT MARKET CAPITALIZATION (1999=1000)

	THURSDAY 01/08/2019	SUNDAY 04/08/2019	% CHANGE	
			DAY BEFORE	YTD
GENERAL	1870.1	1869.5	-0.03%	-2.06%
FINANCIAL	2528.1	2532.9	0.19%	-4.52%
SERVICES	1331.7	1329.0	-0.20%	3.84%
INDUSTRY	1856.2	1846.2	-0.54%	-1.94%

6- STOCK PRICE INDEX WEIGHTED BY MARKET CAPITALIZATION (1991=1000)

	THURSDAY 01/08/2019	SUNDAY 04/08/2019	% CHANGE	
			DAY BEFORE	YTD
GENERAL	3629.9	3630.6	0.02%	-4.39%
BANKS	7422.3	7434.9	0.17%	-9.84%
INSURANCE	1319.7	1322.2	0.19%	-3.94%
SERVICES	769.2	771.8	0.35%	-3.13%
INDUSTRY	2595.3	2580.9	-0.56%	11.66%

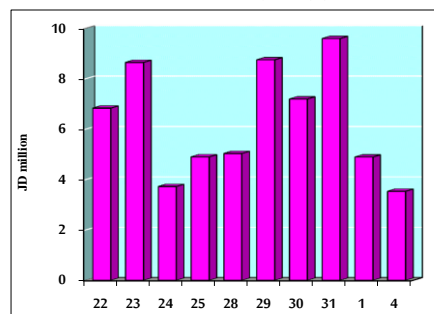
7- STOCK PRICE MARKET INDEX WEIGHTED BY FREE FLOAT MARKET CAP. (2012=1000)

	THURSDAY 01/08/2019	SUNDAY 04/08/2019	% CHANGE	
			DAY BEFORE	YTD
FIRST MARKET	985.6	986.5	0.09%	-2.45%
SECOND MARKET	862.6	856.7	-0.68%	3.02%

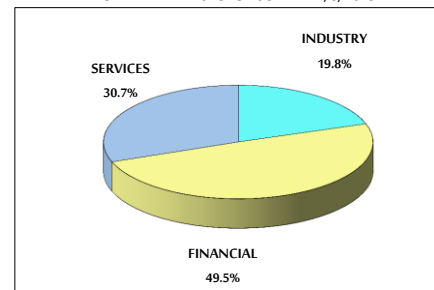
8- MARKET CAPITALIZATION (JD)

ASE MARKET CAPITALIZATION	15,389,794,179	15,394,296,708	0.03%	-4.52%
---------------------------	----------------	----------------	-------	--------

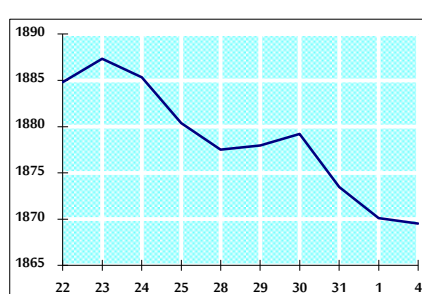
VALUE TRADED FROM 22/7 TO 4/8/2019



VALUE TRADED BY SECTOR SUNDAY 4/8/2019



GENERAL FREE FLOAT PRICE INDEX FROM 22/7 TO 4/8/2019



GENERAL PRICE INDEX FROM 22/7 TO 4/8/2019

