

Daily Summary for Amman Stock Exchange

VALUE TRADED (JD)

	2018	2019	NET CHANGE	CHANGE (%)
Daily	3,575,903	4,723,879	1,147,976	32.10%
Cumulative(1/12-10/12)	27,956,492	46,471,392	18,514,900	66.23%
Cumulative(2/1-10/12)	1,755,203,354	1,473,442,450	-281,760,904	-16.05%

NO. OF SHARES TRADED

	2018	2019	NET CHANGE	CHANGE (%)
Daily	2,120,071	5,912,469	3,792,398	178.88%
Cumulative(1/12-10/12)	23,856,298	48,108,818	24,252,520	101.66%
Cumulative(2/1-10/12)	1,082,476,827	1,159,014,049	76,537,222	7.07%

NO. OF TRANSACTIONS

	2018	2019	NET CHANGE	CHANGE (%)
Daily	1,666	2,145	479	28.75%
Cumulative(1/12-10/12)	12,271	13,926	1,655	13.49%
Cumulative(2/1-10/12)	488,409	479,733	-8,676	-1.78%

SOME FINANCIAL RATIOS FOR THE ASE (10/12/2019)

SECTOR	P/E	P/BV	DIVIDEND YIELD (%)	TURNOVER (%)
FINANCIAL	10.638	0.952	6.046	0.065
SERVICES	14.526	1.082	5.777	0.161
INDUSTRY	16.478	1.352	3.929	0.072
OVERALL	11.224	1.042	5.791	0.089

STOCK PRICE INDEX WEIGHTED BY FREE FLOAT MARKET CAPITALIZATION (1999=1000)

	MONDAY 09/12/2019	TUESDAY 10/12/2019	% CHANGE	
			DAY BEFORE	YTD
GENERAL	1793.8	1800.6	0.38%	-5.67%
FINANCIAL	2423.3	2434.0	0.44%	-8.24%
SERVICES	1279.9	1285.9	0.47%	0.48%
INDUSTRY	1807.8	1807.0	-0.04%	-4.02%

STOCK PRICE INDEX WEIGHTED BY FREE FLOAT MARKET CAPITALIZATION ASE20 (2014=1000)

	876.8	881.0	0.48%	-4.90%
--	-------	-------	-------	--------

STOCK PRICE INDEX WEIGHTED BY MARKET CAPITALIZATION (1991=1000)

	MONDAY 09/12/2019	TUESDAY 10/12/2019	% CHANGE	
			DAY BEFORE	YTD
GENERAL	3462.3	3470.5	0.24%	-8.60%
BANKS	6979.4	7019.6	0.58%	-14.87%
INSURANCE	1297.0	1302.6	0.43%	-5.37%
SERVICES	730.7	729.7	-0.15%	-8.43%
INDUSTRY	2573.0	2563.0	-0.39%	10.89%

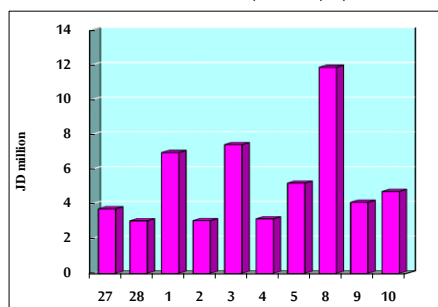
STOCK PRICE MARKET INDEX WEIGHTED BY FREE FLOAT MARKET CAP. (2012=1000)

	MONDAY 09/12/2019	TUESDAY 10/12/2019	% CHANGE	
			DAY BEFORE	YTD
FIRST MARKET	944.5	948.2	0.39%	-6.24%
SECOND MARKET	839.1	840.4	0.16%	1.06%

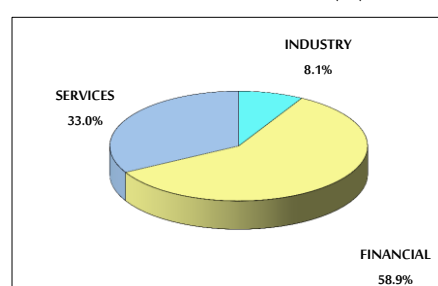
MARKET CAPITALIZATION (JD)

	14,716,351,462	14,754,456,220	0.26%	-8.49%
--	----------------	----------------	-------	--------

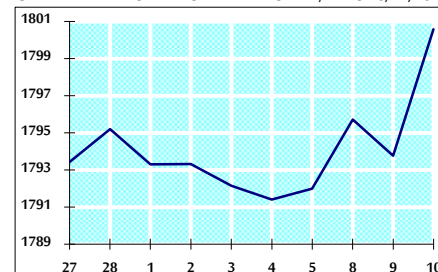
VALUE TRADED FROM 27/11 TO 10/12/2019



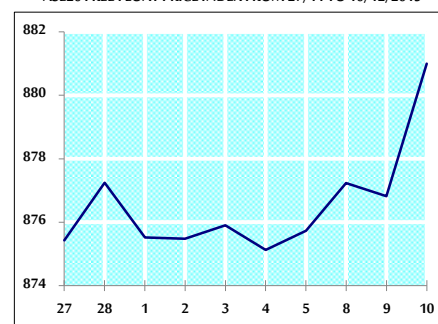
VALUE TRADED BY SECTOR TUESDAY 10/12/2019



GENERAL FREE FLOAT PRICE INDEX FROM 27/11 TO 10/12/2019



ASE20 FREE FLOAT PRICE INDEX FROM 27/11 TO 10/12/2019



GENERAL PRICE INDEX FROM 27/11 TO 10/12/2019

