

## Daily Summary for Amman Stock Exchange

### VALUE TRADED (JD )

	2019	2020	NET CHANGE	CHANGE ( % )
Daily	3,511,076	4,377,159	866,083	24.67%
Cumulative(2/2-12/2)	41,627,813	63,839,879	22,212,066	53.36%
Cumulative(2/1-12/2)	132,522,183	168,869,736	36,347,553	27.43%

### NO. OF SHARES TRADED

	2019	2020	NET CHANGE	CHANGE ( % )
Daily	3,607,972	4,712,932	1,104,960	30.63%
Cumulative(2/2-12/2)	30,992,250	58,434,300	27,442,050	88.54%
Cumulative(2/1-12/2)	96,740,853	151,532,904	54,792,051	56.64%

### NO. OF TRANSACTIONS

	2019	2020	NET CHANGE	CHANGE ( % )
Daily	2,242	2,201	-41	-1.83%
Cumulative(2/2-12/2)	18,187	21,303	3,116	17.13%
Cumulative(2/1-12/2)	54,104	65,457	11,353	20.98%

### SOME FINANCIAL RATIOS FOR THE ASE (12/2/2020)

SECTOR	P/E	P/BV	DIVIDEND YIELD (%)	TURNOVER (%)
FINANCIAL	10.811	0.944	4.960	0.060
SERVICES	15.981	1.138	5.401	0.080
INDUSTRY	17.572	1.442	3.682	0.106
OVERALL	11.753	1.075	4.827	0.071

### STOCK PRICE INDEX WEIGHTED BY FREE FLOAT MARKET CAPITALIZATION (1999=1000)

	TUESDAY 11/02/2020	WEDNESDAY 12/02/2020	% CHANGE	
			DAY BEFORE	YTD
GENERAL	1871.5	1873.9	0.13%	3.23%
FINANCIAL	2514.6	2510.1	-0.18%	2.46%
SERVICES	1343.4	1342.9	-0.03%	3.86%
INDUSTRY	1917.1	1940.8	1.24%	4.51%

### STOCK PRICE INDEX WEIGHTED BY FREE FLOAT MARKET CAPITALIZATION ASE20 (2014=1000)

	926.3	928.0	0.19%	4.15%
--	-------	-------	-------	-------

### STOCK PRICE INDEX WEIGHTED BY MARKET CAPITALIZATION (1991=1000)

	TUESDAY 11/02/2020	WEDNESDAY 12/02/2020	% CHANGE	
			DAY BEFORE	YTD
GENERAL	3549.6	3550.7	0.03%	1.05%
BANKS	7078.4	7058.7	-0.28%	-0.52%
INSURANCE	1324.2	1327.7	0.27%	3.52%
SERVICES	752.2	754.2	0.27%	2.51%
INDUSTRY	2691.7	2707.2	0.57%	3.60%

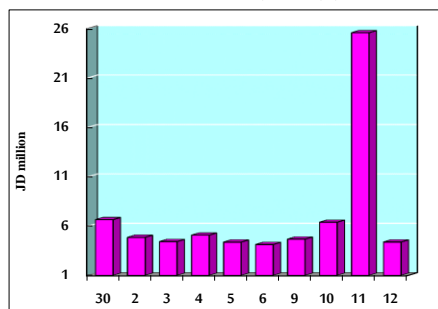
### STOCK PRICE MARKET INDEX WEIGHTED BY FREE FLOAT MARKET CAP. (2012=1000)

	TUESDAY 11/02/2020	WEDNESDAY 12/02/2020	% CHANGE	
			DAY BEFORE	YTD
FIRST MARKET	993.9	995.4	0.15%	4.14%
SECOND MARKET	838.9	839.4	0.06%	0.40%

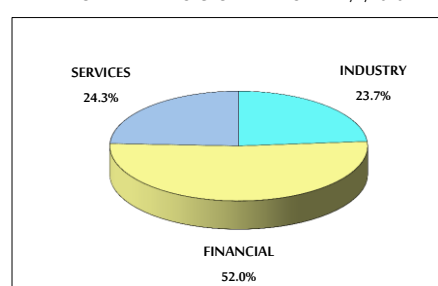
### MARKET CAPITALIZATION (JD)

	15,046,905,892	15,046,904,395	0.00%	0.89%
--	----------------	----------------	-------	-------

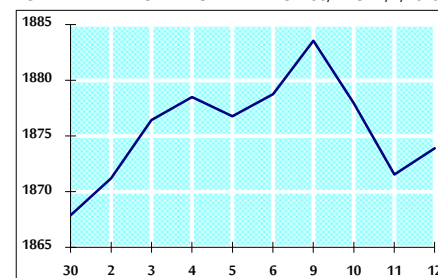
### VALUE TRADED FROM 30/1 TO 12/2/2020



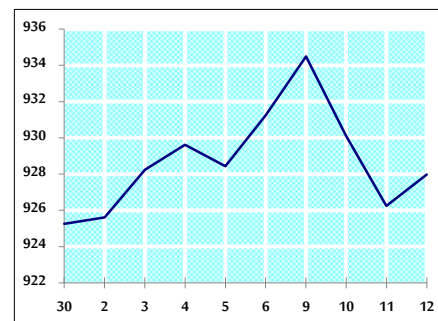
### VALUE TRADED BY SECTOR WEDNESDAY 12/2/2020



### GENERAL FREE FLOAT PRICE INDEX FROM 30/1 TO 12/2/2020



### ASE20 FREE FLOAT PRICE INDEX FROM 30/1 TO 12/2/2020



### GENERAL PRICE INDEX FROM 30/1 TO 12/2/2020

